

How to Install a Software Update on the DSS-5000

The DSS-5000 includes the capability to perform over-the-air (Wi-Fi) software updates to ensure the device has the latest software, databases and feature enhancements. This document goes step-by-step through the process of installing a software update for the DSS-5000.

Contents

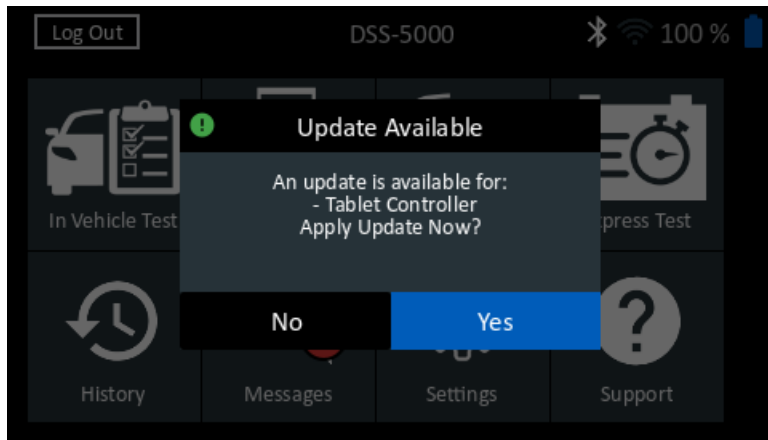
Requirements	1
Method #1: Update Available Pop-Up Message	1
Method #2: Messages App.....	2
Method #3: Settings App.....	3
Automatically Performing the Software Update Overnight	3
Manually Performing the Software Update	3
Common Troubleshooting.....	6

Requirements


Before performing a software update, please ensure the Controller and Tester Pod are combined and plugged into power. If you purchased the DSS-5000 Dock, combine the Controller and Tester Pod, place in the Dock, and ensure the Dock is connected to power. The Controller must be connected to a Wi-Fi connection with Internet access to perform a software update.

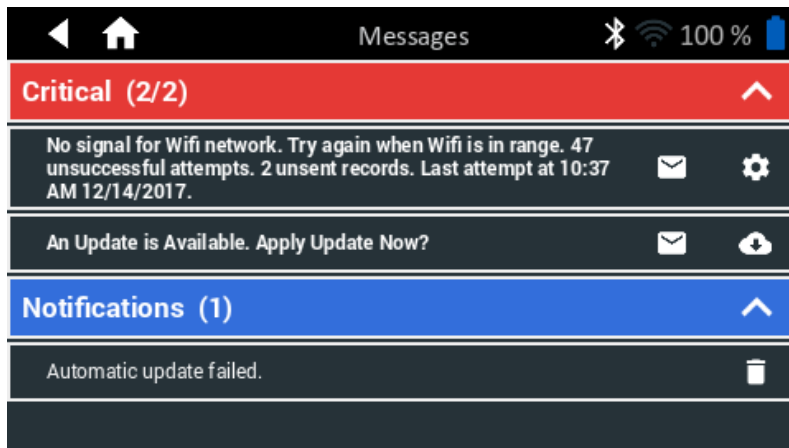
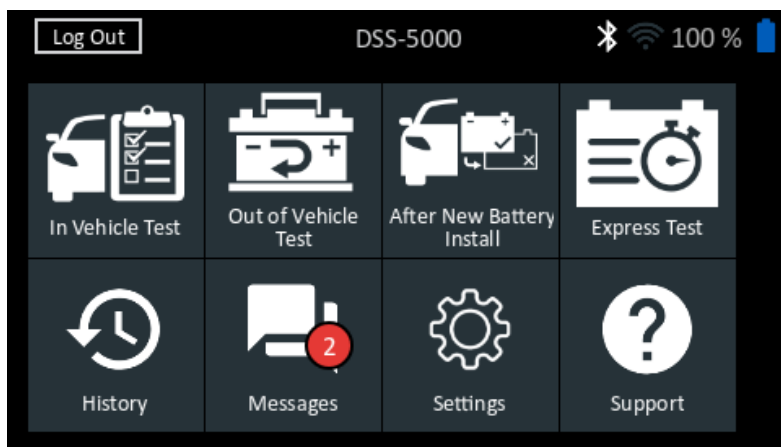
Method #1: Update Available Pop-Up Message

Periodically the DSS-5000 checks for available software updates. When an update is available a pop-up message like the one below is displayed. Make sure you meet the requirements discussed above, and press **Yes** to continue. Press **No** to install the software update later.



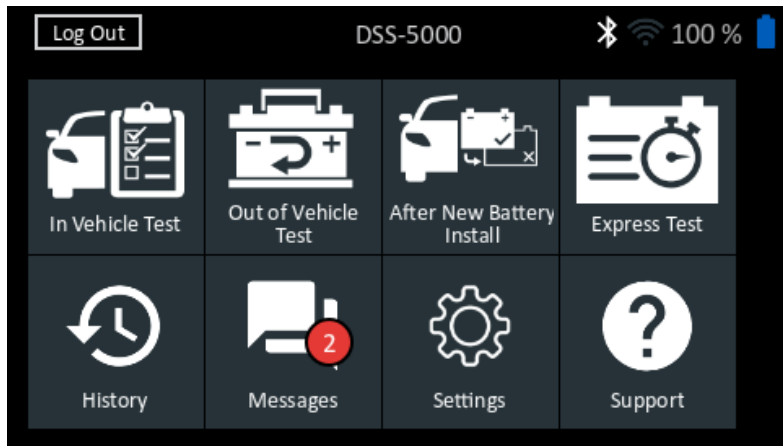
Method #2: Messages App

You are also alerted when a software update is available through the Messages app on the Main Screen. In the example below, there are two critical messages. One of them is alerting the user that a software update is available. To proceed with the software update from the Messages screen, tap on the Cloud icon .



Method #3: Settings App

The third way to begin a software update is through the Settings app on the Main Menu.



Scroll all the way down the menu on the left side of the Settings page to the Information (i) icon. Here you can find your DSS serial number, version of software installed, and additional information. At the bottom, right corner of the Version Information screen is a

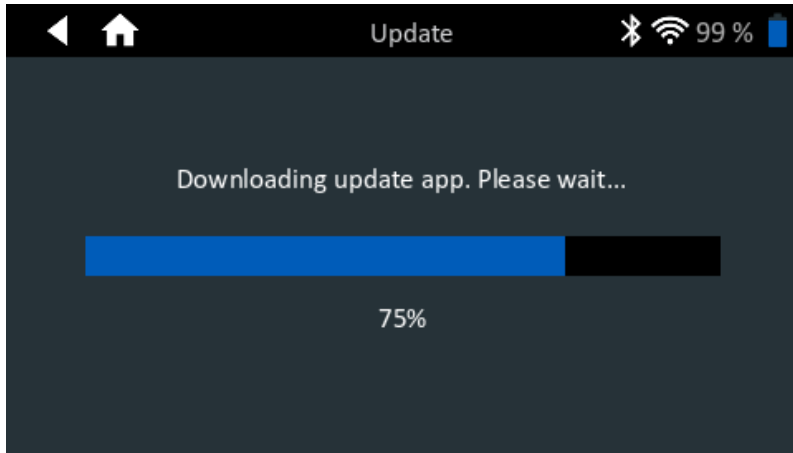
box with a downwards pointing arrow . Tap that to check for software updates.

Automatically Performing the Software Update Overnight

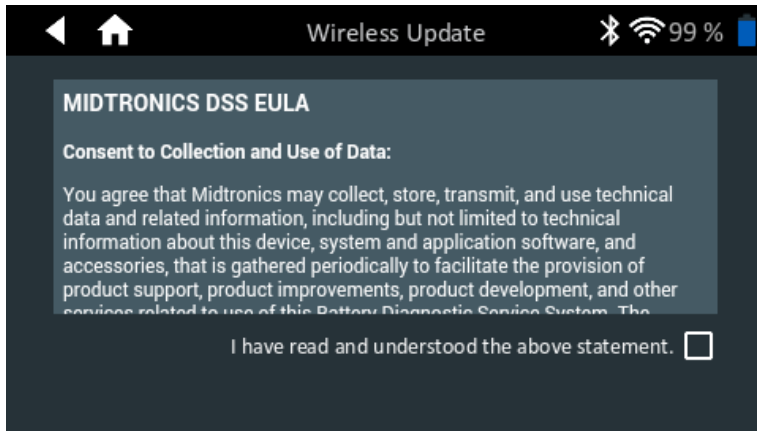
The easiest way to ensure your DSS-5000 automatically performs any available software updates is to always dock your DSS-5000 at the end of the day in the dock. Make sure the dock is connected to power, and that the Controller has Wi-Fi Internet access. The DSS-5000 will automatically wake itself up overnight to check for any available software updates, and perform the installation without manual user intervention.

Manually Performing the Software Update

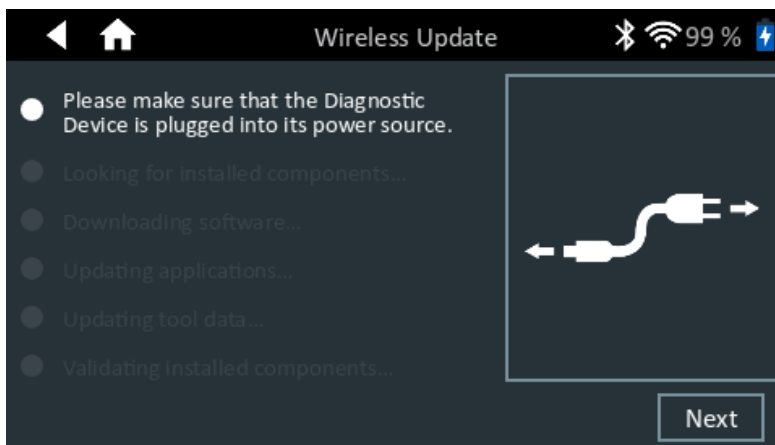
Whether through the pop-up window, Messages app or Settings app, once you begin the software update process you will see a screen like the one below which indicates your DSS-5000 is downloading the latest update installer application. Depending on the speed of your Wi-Fi Internet connection, this process should take between 2-5 minutes.



Once you have downloaded the latest update installer application you are asked to accept the End User License Agreement (EULA) by taping in the checkbox.



The next screen is a reminder to make sure that the DSS-5000 is plugged into a power source. Press the **Next** button to continue the update.



The DSS-5000 will now examine itself to determine which components are installed.



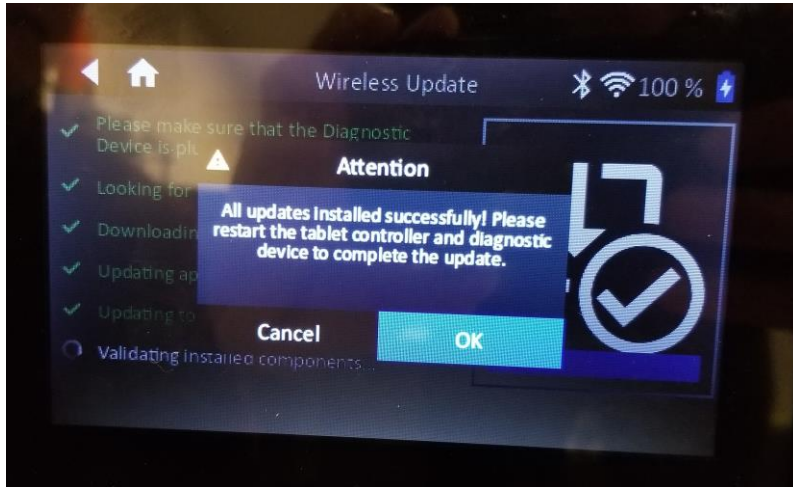
The third step is downloading the contents of the new software update. Depending on the speed of your Internet connection and the size of the update, expect this process to take between 3-7 minutes.



Once the software download has completed the DSS-5000 will perform the installation.

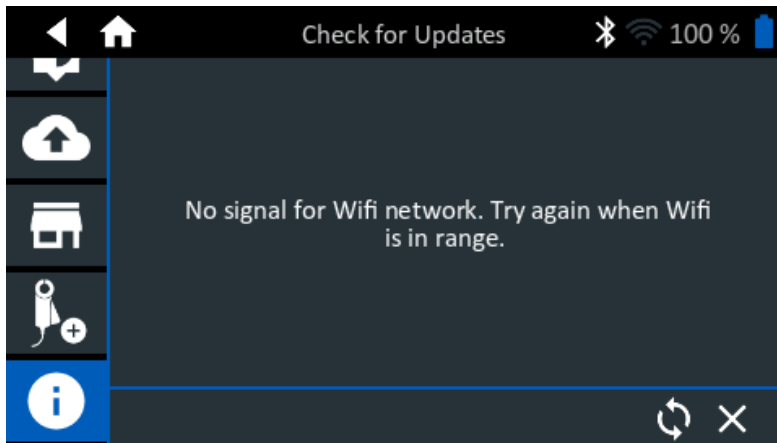


Once the install is complete you will see a screen informing you that the update was successful, and asking you to reboot the DSS-5000.

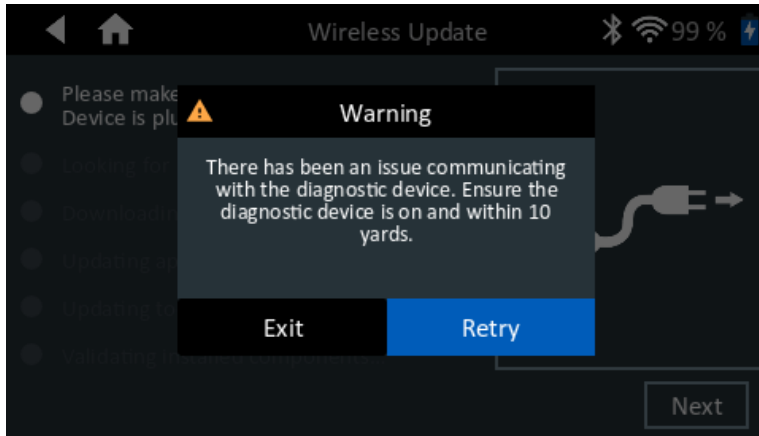


Common Troubleshooting

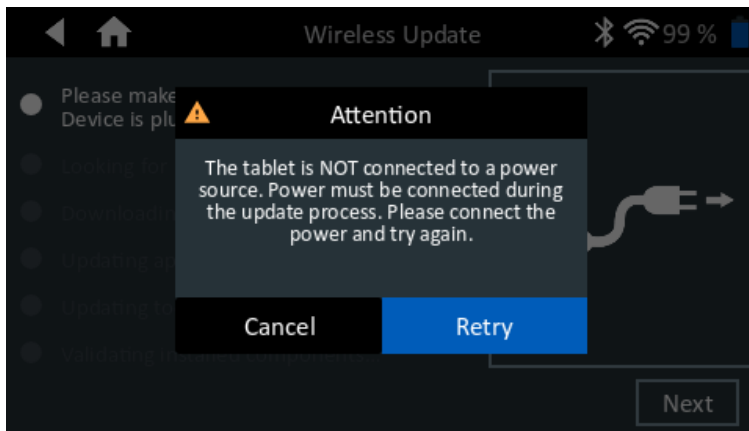
Remember to check that the DSS-5000 is connected to a Wi-Fi network which can access the Internet before performing a software update.



A Warning screen will appear if the Controller and Tester Pod are not within Bluetooth range of each other (~30 feet) during the software update process.



An Attention screen is displayed if the Controller is not connected to power when you try to begin a software update.



Not pictured, you will get a Warning message if the internal AA batteries inside the Tester Pod are too low telling you to replace the batteries before you can continue with the software update.

By Jeff Jones, Product Manager

Last Updated December 14, 2017